



**mañe lozano**

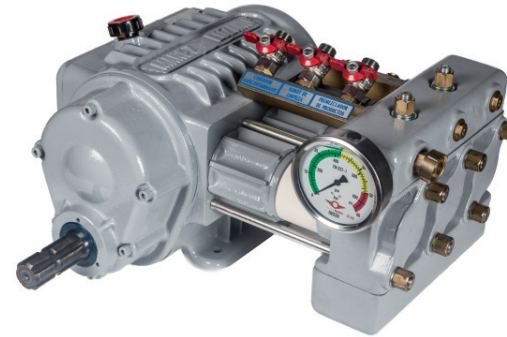
Passion, experience, commitment and innovation



**TWISTER S5**

# STANDARD EQUIPMENT

- Cold rerolled structural tube frame
- Telescopic drawbar
- Stirrup for easy access to the tank filler neck
- Jockey wheel support
- High quality polyethylene main tank with uniform thickness and front and side level indicator.
- Hand-washing and circuit-washing tank
- Multiple filtering system
- Product Mixer
- Cleaning robot inside the main tank
- Hydraulic Agitator
- High pressure piston pump with reducer shaft
- Electric ON/OFF controls
- Internal transmission category 4 SAE G7
- External transmission and connection to CV tractor category 4 SAE G7



Pump specially designed for atomizers. This pump is mounted with a reducer and a through shaft: the through shaft allows us to directly transmit the revolutions of the tractor joint shaft to the air system, and the reducer decreases the revolutions of the pump crankshaft, lowering the power absorption and, therefore, both the fuel consumption and wear of the pump.



Control with double switch to increase or decrease pressure (optional) and two switches to activate or deactivate the left and right solenoid valves.

## NEWS



01



02



03

- 01 Removable side wings to allow easy access to the inside of the equipment for lubrication, oil changes, etc.
- 02 Easy opening of the twister assembly for storage.
- 03 Redesigned and quieter adjustable curved blades, which provide higher throughput with lower power absorption

# TWISTER



## TECHNICAL SPECIFICATIONS



### FUEL TANK CAPACITY (Litres)

MAIN	HAND-WASHER	CIRCUIT-WASHER
1500	25	135
2000	25	135



### SHAFT-DRIVE-TYRES

SHAFT	DRIVE	TYRES
50X1250	161 - 6 T	10.0/75-15.3"
50X1350	161 - 6 T	10.0/75-15.3"



### WEIGHT

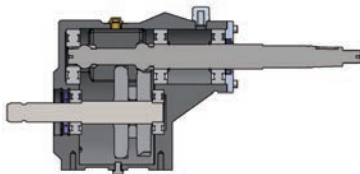
KG
550
600



### DIMENSIONS

A	B	C
155	298	161
165	327	161

- 01 SUPPORT WITH WHEEL
- 02 PUMP WITH THROUGH GEARBOX SHAFT
- 03 ELECTRIC CONTROL
- 04 FRONT LEVEL INDICATOR
- 05 POLYETHYLENE HAND-WASHING TANK
- 06 POLYETHYLENE CIRCUIT-WASHING TANK
- 07 POLYETHYLENE MAIN TANK
- 08 TWISTER TURBINE
- 09 FOLDING OPENING SYSTEM
- 10 DURALUMIN ROTOR CORE
- 11 ALUMINIUM CLUTCH LININGS
- 12 ADJUSTABLE BLADES WITH CURVED DESIGN
- 13 TRIPLE ADJUSTABLE NOZZLE
- 14 STEP
- 15 TWO SPEED AND NEUTRAL GEARBOX TRANSMISSION
- 16 WHEELS 10.0/75-15.3"
- 17 HYDRAULIC STIRRER
- 18 STRUCTURAL TUBE AND FOLDED SHEET FRAME



- Parallel shaft gearbox with two speeds and neutral
- Robust crankcase casting
- Transmission ratio for the slow speed of 1:3.5 and 1:4.4 for rapid speed
- Gears in oil bath
- Easy access and maintenance
- Mechanism capable of withstanding huge forces



- The Tronic volumetric control is able to apply the l/Ha required for each treatment with respect to the forward speed.
- 3.2 " (320X240) TFT colour screen which allows you to view all functions simultaneously
- Identification of electrical faults with on-screen alarms
- Agenda that allows us to work with 50 different fields and 15 different treatments



- The Sistromatic control includes ultrasonic sensors for detecting trees
- Real-time plant and tree counters
- Control of input and output delays
- 3.2 " (320x240) TFT colour screen with backlit keyboard
- Identification of electrical faults with on-screen alarms

# OPTIONAL EQUIPMENT



DRAWBAR TO TRACTOR COUPLING



DRAWBAR TO THE TRACTOR ARMS



ANTI-LEAF FLAP



REAR DRAWER



HYDRAULIC BRAKES



WHEELS 340/55-16"



LIGHT INSTALLATION



ELECTRICAL VALVE PRESSURE REGULATION KIT



TRONIC VOLUMETRIC CONTROL KIT



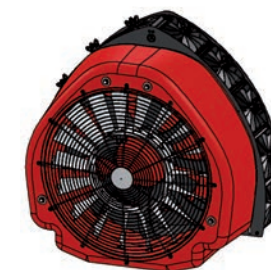
SISTROMATIC CONTROL KIT WITHOUT FLOWMETER



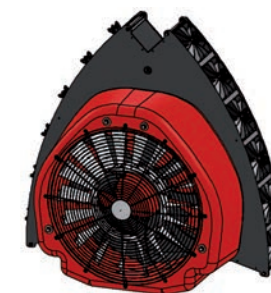
ANTI-LEAF GRATE

# TWISTER AIR SYSTEM

- Polyethylene fan housing
- Stainless Steel deflector with 18 blades to ensure even distribution on both sides of the air volume
- Three-channel air duct system which increases production, preventing rapid air produced at the top of the rotor colliding with the slow air generated in the central part
- Two-speed and neutral gearbox transmission
- Rotor with aluminium core and steel jacket to prevent wear due to friction with the clutch
- Eight adjustable blades with curved design that reduces power absorption and lowers the noise level and fuel consumption.
- Aluminium clutch linings which enable smooth and progressive start up
- Stainless steel supply pipes
- Triple anti-drip nozzle holders with spray tip nozzles
- Twister spiral system which generates spray at the air flow outlet, allowing us to maintain the vegetation of the moving plant, preventing the shielding effect that prevents the air flow and liquid flow from entering the inside of the tree. The system prevents the excess concentrated liquid at the same point from draining and spilling onto the ground and polluting the environment.



*Twister S5 model has 5 diffusers per side and is specially designed for deciduous plantations*



*The Twister S6 model has a pipeline system which allows you to incorporate 6 nozzles per side for working on plantations with tall trees*

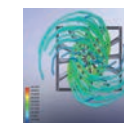
*TWISTER IS THE ENGLISH WORD FOR “TORNADO” IN SPANISH OR “TORNADE” IN FRENCH.*

*THE WORD TWISTER MEANS SOMETHING THAT ROTATES, AND IS A METEOROLOGICAL PHENOMENON THAT CONSISTS OF A VORTEX OF AIR THAT TURNS ON ITSELF IN A SPIRAL.*

*WITH THE NEW TWISTER AIR SYSTEM FOR DESIGNED AND PATENTED TREATMENT EQUIPMENT, WE HAVE SOUGHT TO EMULATE THIS CLIMATIC EVENT AND THUS ACHIEVE WHAT OTHER AIR EQUIPMENT HAS NOT BEEN ABLE TO; TO EFFECTIVELY PENETRATE THE INSIDE OF THE TREE AND OBTAIN ONE HUNDRED PERCENT EFFECTIVE TREATMENT.*

*IN COORDINATION WITH THIS TECHNOLOGICAL INNOVATION, WE HAVE DESIGNED A NEW NOZZLE HOLDER WHICH ENABLES US TO WORK WITH THREE NOZZLES SIMULTANEOUSLY AND UP TO A TOTAL THAT MAY RANGE BETWEEN 30 AND 36 UNITS FOR EACH UNIT OF EQUIPMENT. THE NOZZLE HOLDERS DIRECT THE NOZZLES AT DIFFERENT ANGLES, ACHIEVING A COVERAGE OF 145° IN CONTRAST TO THE 45° OF A CONVENTIONAL NOZZLE.*

*THE ATTACHMENT OF THE TWISTER AND THE NOZZLE HOLDER MAKES FOR A SUPERB AND ACCURATE PIECE OF EQUIPMENT WHICH GUARANTEES US UNIFORM TREATMENT OF BOTH THE OUTSIDE AND INSIDE OF THE TREE.*



## AIR SYSTEM CHARACTERISTICS

FAN	BLADES	SPEED	NOZZLE HOLDERS		CLUTCH	AIR DUCTS	HP	RANGE (m)	
Ø mm	no.	gear	S5	S6		no.	540 RPM	LAT.	VERT.
920	8	1	30	36	✓	3	51	9	8
920	8	2	30	36	✓	3	51	9	8

# TWISTER S6



Poligono Industrial Norte, s/n  
46230 ALGINET (Valencia) España

Tels: (+34) 96 175 05 18 Fax: (+34) 96 172 18 40  
(+34) 96 175 12 66

[ml@manezylozano.com](mailto:ml@manezylozano.com)  
[www.manezylozano.com](http://www.manezylozano.com)

DISTRIBUTOR: